

MOUNTING INSTRUCTIONS

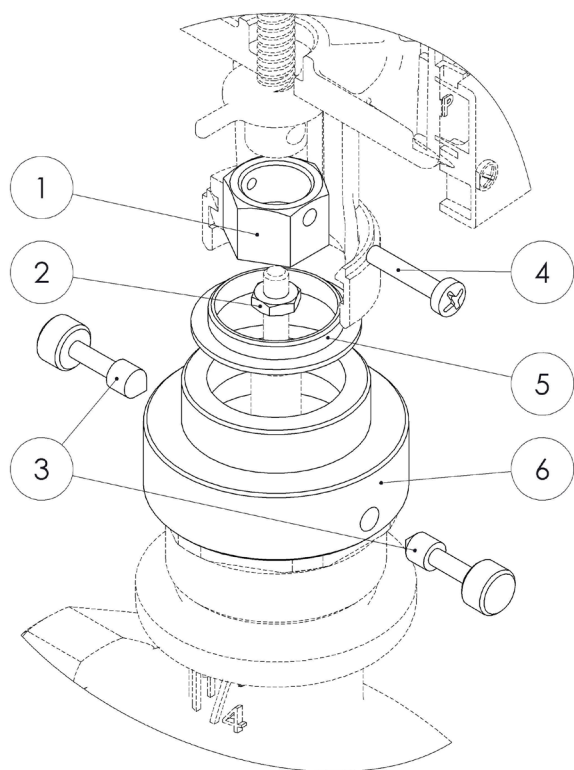


Fig. 1

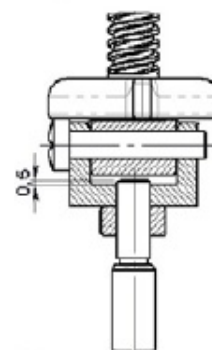


Fig. 2

- Screw locknut **(2)** on the valve stem. You can use the existing securing nut that comes with the valve after you have removed slotted brass nut;
- screw locknut **(1)** hex nut on to the valve stem and secure with locknut **(2)**, see also Fig. 2;
- insert the joint **(6)** on the valve neck and screw down completely the screws **(3)**;
- insert the ring collar **(5)** into the hole of the actuator ring nut;
- screw the thumbscrew collar over the joint **(6)**;
- align actuator spindle slot with the hole in locknut **(1)**, secure with bolt **(4)** through non threaded hole in locknut **(1)**. You may need to manually override the actuator to line up the holes.